



EZ EDGE™ TRANSITIONS

brought to you by
ACCESSIBLE SOLUTIONS



888-534-9211

debbie@MakeYourHomeAccessible.com





EZ Edge™ Rubber Transition Product Line:

In this catalog you will find the world's largest selection of recycled rubber transition ramps. Designed for durability and safety, these ramps can be used in the harshest conditions for both exterior and interior applications for commercial and residential purposes.

We were the first to receive a U.S. Patent for recycled rubber transitions and have been supplying the architectural and building industry for over 24 years with high quality, long lasting barrier removal products. All EZ Edge™ transition products come with a 10 year standard warranty and have been featured on national programs such the History Channel and This Old House.

SafePath™ is recognized as the leader in "green product" barrier removal products, which are made from 100% post-consumer recycled tire rubber material. Only the highest quality recycled material is allowed in our products and we guarantee each and every product produced for workmanship, durability, safety and years of maintenance free use.



Table of Contents

Intro.....	pg. 2
EZ Edge™ ramp selection	pg. 4–39
Installation Instructions	pg. 40
Material Safety Data Sheet	pg. 41
Specification Sheet	pg. 42–46



EZ Edge Transitions™

MRAEZ 0010 1/2"H

Product Title:

EZ Edge Transition

Model No.

MRAEZ 0010

UPC:

857293006661

Product Dimensions:

1/2" H x 3.25" D x 41.25" L

Carton Dimensions:

2" H x 8.75" W x 43" L

Freight Class:

55

Lead Time:

1-3 Business Days

Product Weight:

3 Lbs.

Ship Weight:

4 Lbs.

Product Color:

Black

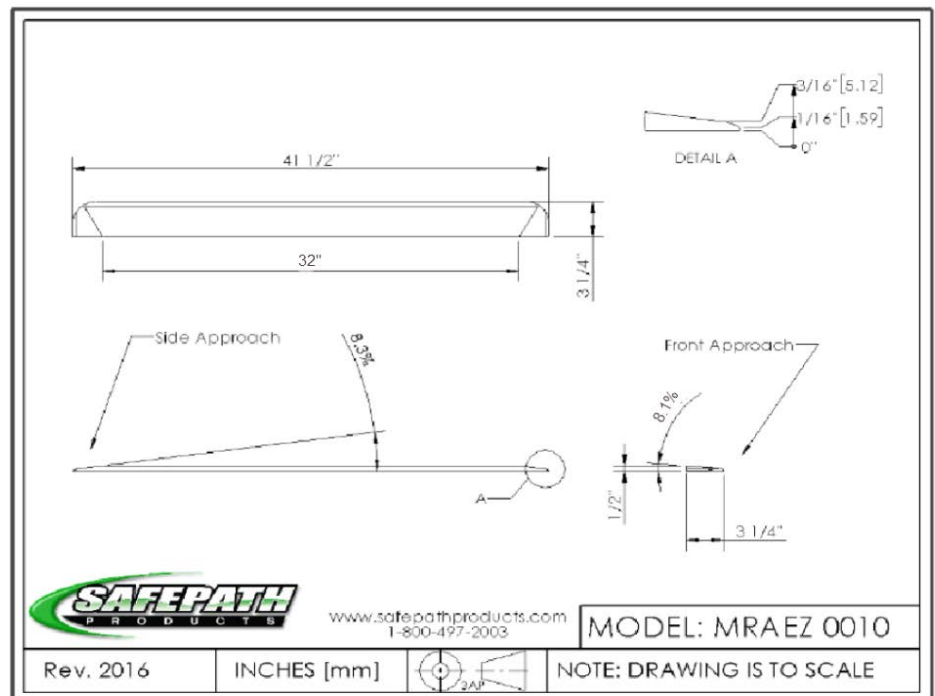
MRSP:

Comments:

D= Depth of Product

Made from 100% Recycled Rubber-perfect for exterior, interior, residential and commercial applications, these ramps have no load weight limitations, unlike aluminum ramp products.

MADE in the USA





EZ Edge TransitionsTM

MRAEZ 0040 1/2"H

Product Title:

EZ Edge Transition

Model No.

MRAEZ 0040

UPC: **857293006628**

Product Dimensions:

1/2" H x 3.25" D x 74.25" L

Carton Dimensions:

2" H x 8.875" W x 43" L

Freight Class:

55

Lead Time:

1-3 Business Days

Product Weight:

5.5 Lbs.

Ship Weight:

6.5 Lbs.

Product Color:

Black

MRSP:

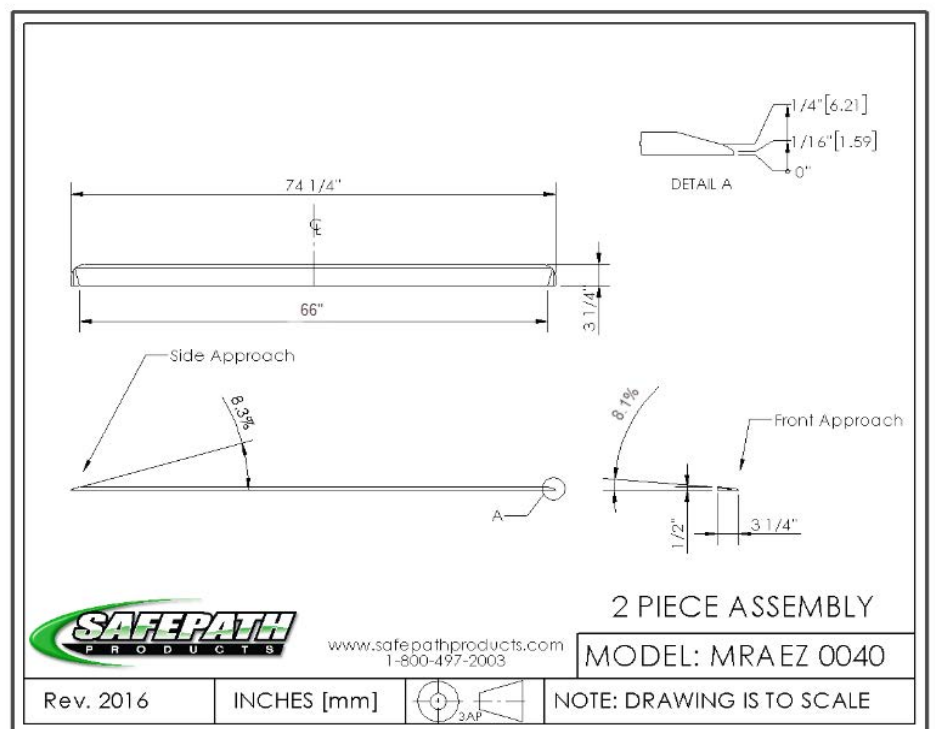
Comments:

Two Part Assembly

D= Depth of Product

Made from 100% Recycled Rubber-perfect for exterior, interior, residential and commercial applications, these ramps have no load weight limitations, unlike aluminum ramp products.

MADE in the USA






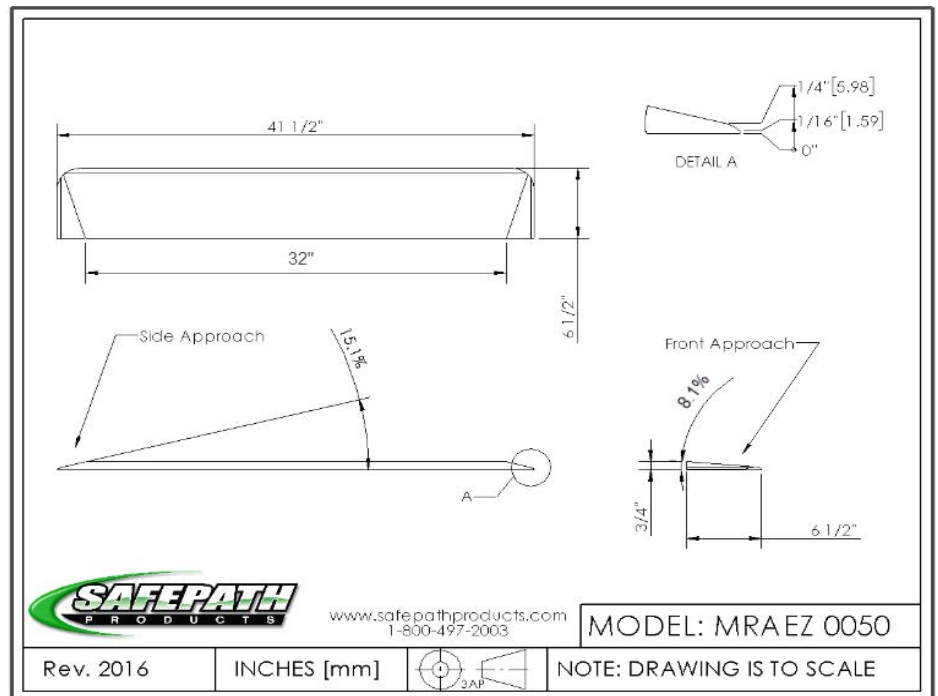
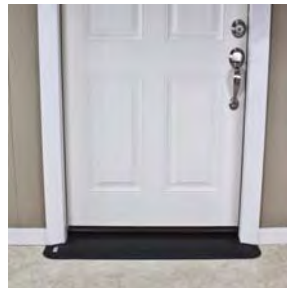
EZ Edge TransitionsTM

MRAEZ 0050 3/4" H

Product Title:	EZ Edge Transition
Model No.	MRAEZ 0050
UPC:	857293006635
Product Dimensions:	3/4" H x 6.5" D x 41.5" L
Carton Dimensions:	2" H x 9" W x 43" L
Freight Class:	55
Lead Time:	1-3 Business Days
Product Weight:	6 Lbs.
Ship Weight:	7 Lbs.
Product Color:	Black
MRSP:	
Comments:	
D= Depth of Product	

Made from 100% Recycled Rubber-perfect for exterior, interior, residential and commercial applications, these ramps have no load weight limitations, unlike aluminum ramp products.

MADE in the USA 






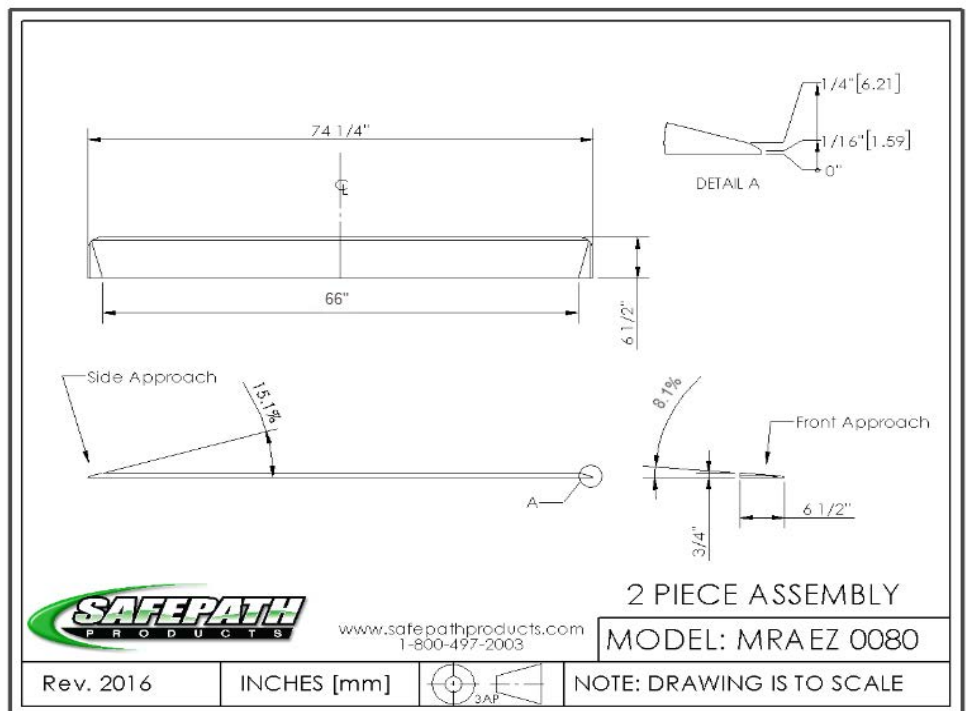
EZ Edge TransitionsTM

MRAEZ 0080 3/4" H

Product Title:	EZ Edge Transition
Model No.	MRAEZ 0080
UPC:	857293006642
Product Dimensions:	3/4" H x 6.5" D x 74.25" L
Carton Dimensions:	2" H x 9" W x 43" L
Freight Class:	55
Lead Time:	1-3 Business Days
Product Weight:	9.5 Lbs.
Ship Weight:	11 Lbs.
Product Color:	Black
MRSP:	
Comments:	Two Part Assembly
	D= Depth of Product

Made from 100% Recycled Rubber-perfect for exterior, interior, residential and commercial applications, these ramps have no load weight limitations, unlike aluminum ramp products.

MADE in the USA 





EZ Edge TransitionsTM

MRAEZ 0110 7/8"H

Product Title:

EZ Edge Transition

Model No.

MRAEZ 0110

UPC:

857293006659

Product Dimensions:

7/8" H x 8" D x 42" L

Carton Dimensions:

2" H x 9" W x 43" L

Freight Class:

55

Lead Time:

1-3 Business Days

Product Weight:

8 Lbs.

Ship Weight:

9 Lbs.

Product Color:

Black

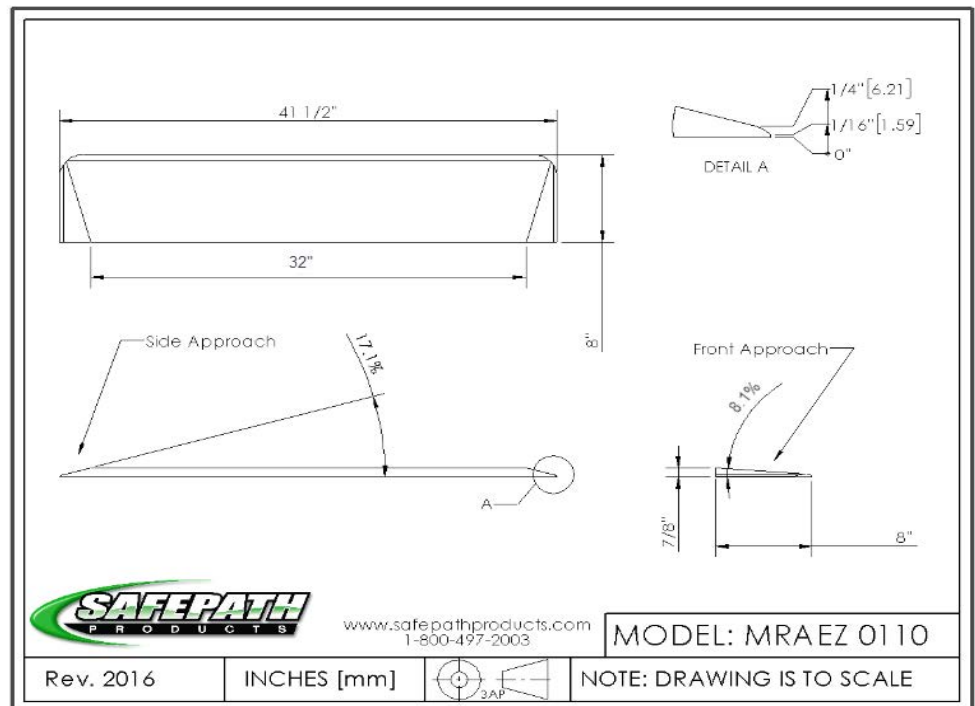
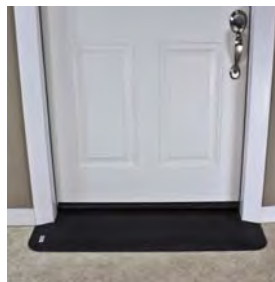
MRSP:

Comments:

D= Depth of Product

Made from 100% Recycled Rubber-perfect for exterior, interior, residential and commercial applications, these ramps have no load weight limitations, unlike aluminum ramp products.

MADE in the USA






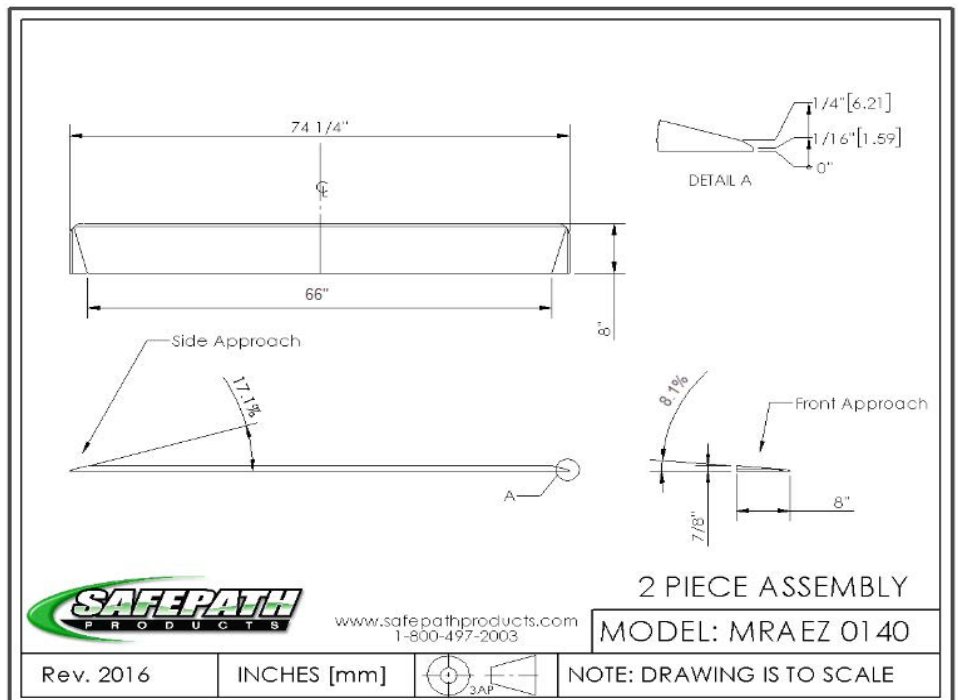
EZ Edge TransitionsTM

MRAEZ 0140 7/8"H

Product Title:	EZ Edge Transition
Model No.	MRAEZ 0140
UPC:	857293006420
Product Dimensions:	7/8" H x 8" D x 74.25" L
Carton Dimensions:	2" H x 9" W x 43" L
Freight Class:	55
Lead Time:	1-3 Business Days
Product Weight:	13 Lbs.
Ship Weight:	14 Lbs.
Product Color:	Black
MRSP:	
Comments:	Two Part Assembly
D= Depth of Product	

Made from 100% Recycled Rubber-perfect for exterior, interior, residential and commercial applications, these ramps have no load weight limitations, unlike aluminum ramp products.

MADE in the USA 



888-534-9211



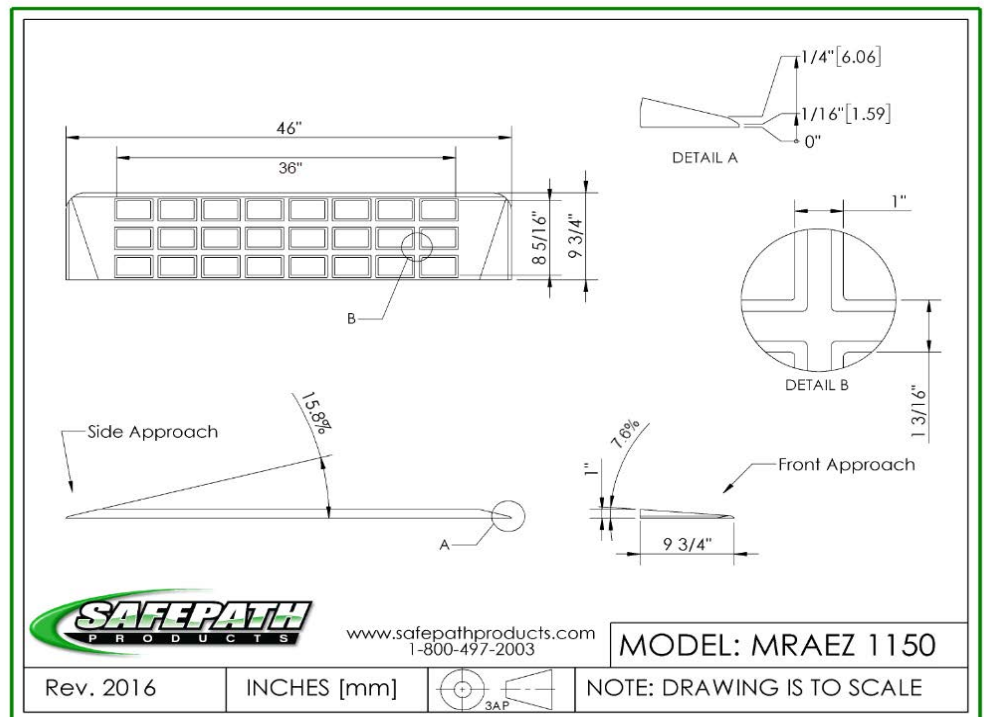
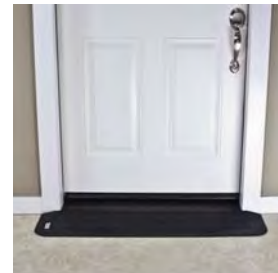
EZ Edge TransitionsTM

MRAEZ 1150 1"H

Product Title:	EZ Edge Transition
Model No.	MRAEZ 1150
UPC:	857293006437
Product Dimensions:	1" H x 9.75" D x 46" L
Carton Dimensions:	2" H x 14.5" W x 47"
Freight Class:	55
Lead Time:	1-3 Business Days
Product Weight:	12 Lbs.
Ship Weight:	13 Lbs.
Product Color:	Black
MRSP:	
Comments:	
D= Depth of Product	

Made from 100% Recycled Rubber-perfect for exterior, interior, residential and commercial applications, these ramps have no load weight limitations, unlike aluminum ramp products.

MADE in the USA





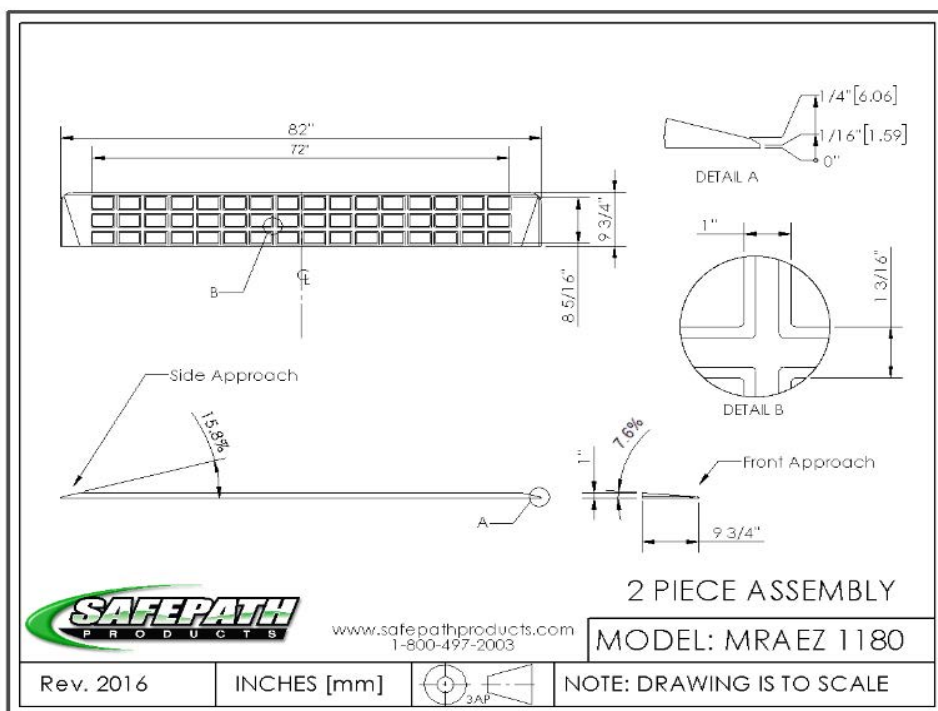
EZ Edge TransitionsTM

MRAEZ 1180 1"H

Product Title:	EZ Edge Transition
Model No.	MRAEZ 1180
UPC:	857293006444
Product Dimensions:	1" H x 9.75" D x 82" L
Carton Dimensions:	2" H x 14.5"W x 47"
Freight Class:	55
Lead Time:	1-3 Business Days
Product Weight:	20 Lbs.
Ship Weight:	21 Lbs.
Product Color:	Black
MRSP:	
Comments:	Two Part Assembly
D= Depth of Product	

Made from 100% Recycled Rubber-perfect for exterior, interior, residential and commercial applications, these ramps have no load weight limitations, unlike aluminum ramp products.

MADE in the USA





EZ Edge TransitionsTM

MRAEZ 1110 1-1/4"H

Product Title:

EZ Edge Transition

Model No.

MRAEZ 1110

UPC:

857293006451

Product Dimensions:

1-1/4" H x 14" D x 46" L

Carton Dimensions:

2" H x 14.5" W x 47" L

Freight Class:

55

Lead Time:

1-3 Business Days

Product Weight:

20 Lbs.

Ship Weight:

21 Lbs.

Product Color:

Black

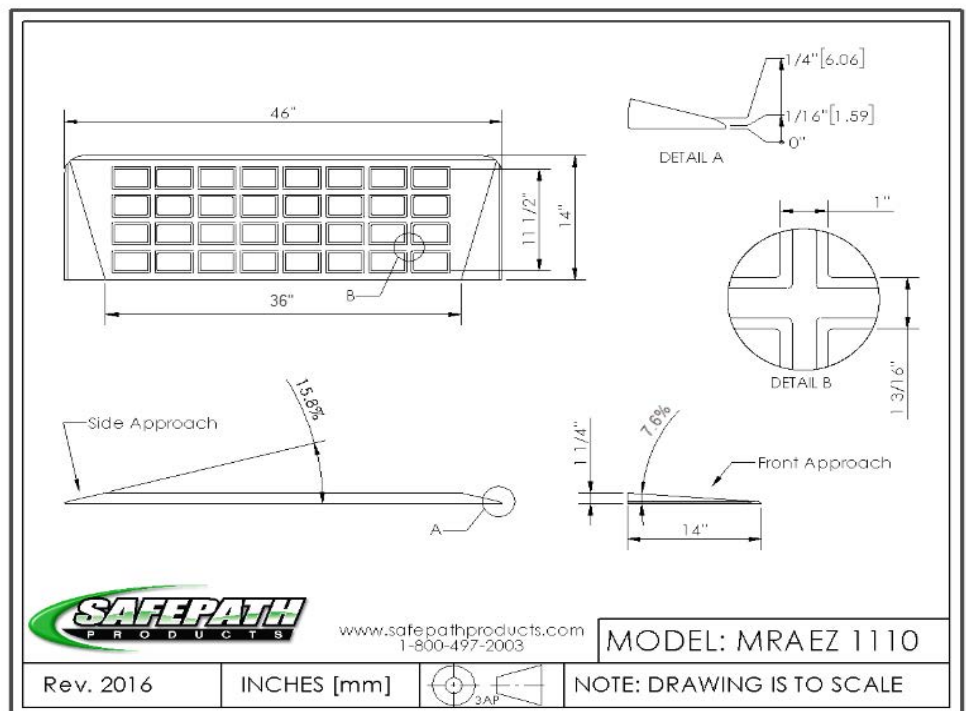
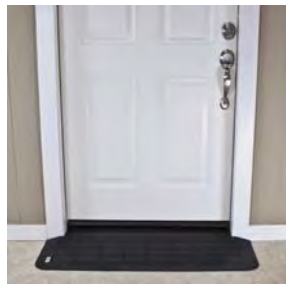
MRSP:

Comments:

D= Depth of Product

Made from 100% Recycled Rubber-perfect for exterior, interior, residential and commercial applications, these ramps have no load weight limitations, unlike aluminum ramp products.

MADE in the USA





EZ Edge TransitionsTM

MRAEZ 1140 1-1/4"H

Product Title:

EZ Edge Transition

Model No.

MRAEZ 1140

UPC:

857293006468

Product Dimensions:

1-1/4" H x 14" D x 82" L

Carton Dimensions:

2" H x 14.5" W x 47" L

Freight Class:

55

Lead Time:

1-3 Business Days

Product Weight:

35 Lbs.

Ship Weight:

36 Lbs.

Product Color:

Black

MRSP:

Comments:

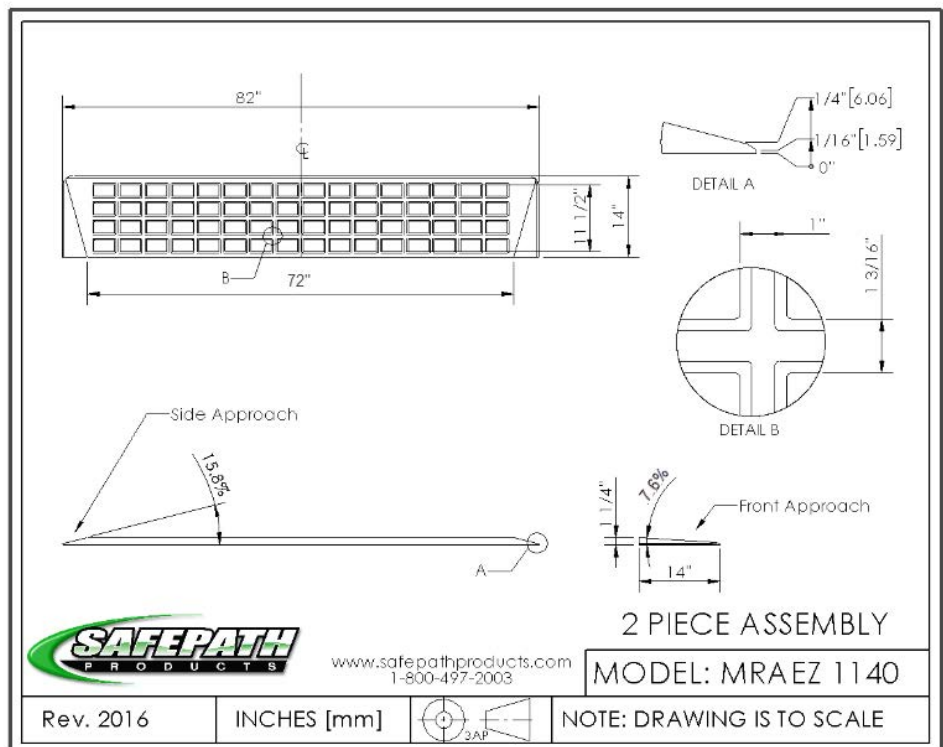
Two Part Assembly

D= Depth of Product



Made from 100% Recycled Rubber-perfect for exterior, interior, residential and commercial applications, these ramps have no load weight limitations, unlike aluminum ramp products.

MADE in the USA



888-534-9211



EZ Edge TransitionsTM

MRAEZ 1310 1-1/2"H

Product Title:

EZ Edge Transition

Model No.

MRAEZ 1310

UPC:

857293006475

Product Dimensions:

1-1/2" H x 17.75" D x 46" L

Carton Dimensions:

3" H x 23.25" W x 47" L

Freight Class:

55

Lead Time:

1-3 Business Days

Product Weight:

28 Lbs.

Ship Weight:

29 Lbs.

Product Color:

Black

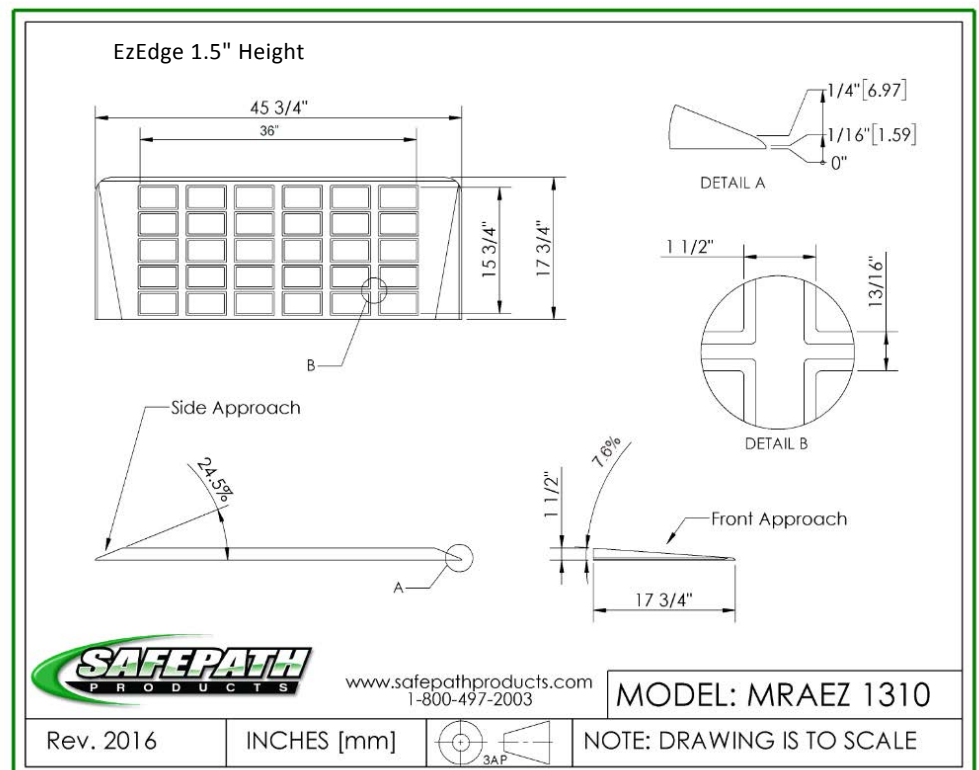
MRSP:

Comments:

D= Depth of Product

Made from 100% Recycled Rubber-perfect for exterior, interior, residential and commercial applications, these ramps have no load weight limitations, unlike aluminum ramp products.

MADE in the USA



888-534-9211



EZ Edge TransitionsTM

MRAEZ 1340 1-1/2"H

Product Title:

EZ Edge Transition

Model No.

MRAEZ 1340

UPC:

857293006482

Product Dimensions:

1-1/2" H x 17.75" D x 81.25"

Carton Dimensions:

3" H x 23.25" W x 47" L

Freight Class:

55

Lead Time:

1-3 Business Days

Product

Weight: **54 Lbs.**

Ship Weight:

55 Lbs.

Product Color:

Black

MRSP:

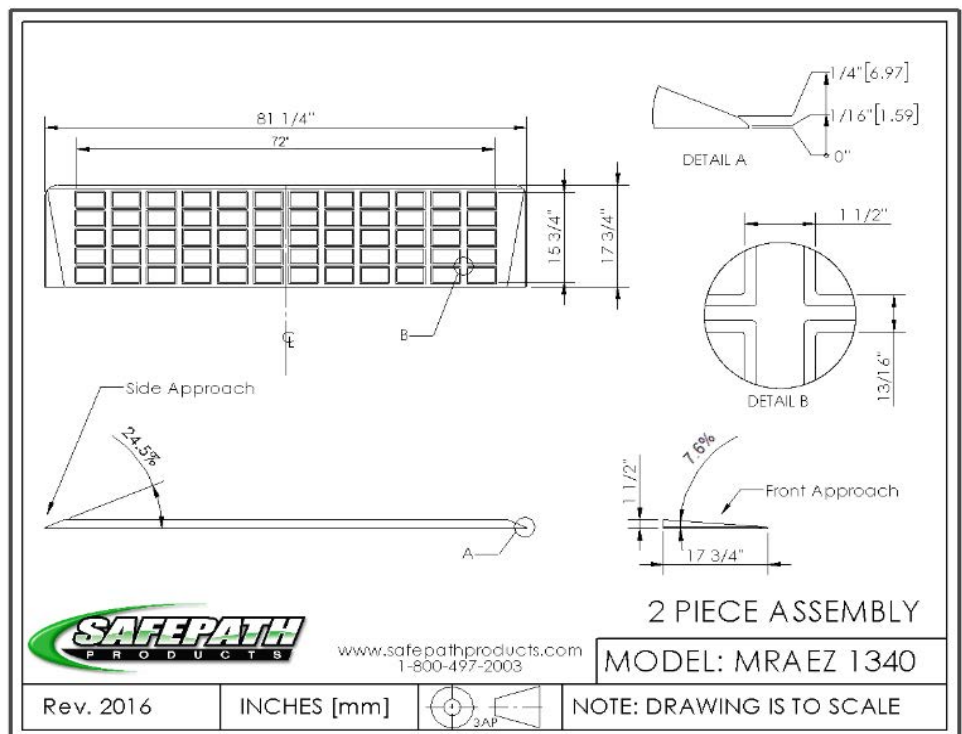
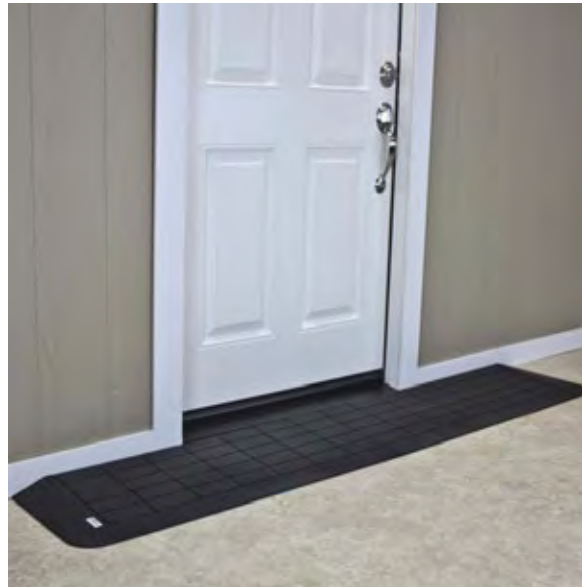
Comments:

Two Part Assembly

D= Depth of Product

Made from 100% Recycled Rubber-perfect for exterior, interior, residential and commercial applications, these ramps have no load weight limitations, unlike aluminum ramp products.

MADE in the USA





EZ Edge Transitions™

MRAEZ 1510 1-3/4" H

Product Title:

EZ Edge Transition

Model No.

MRAEZ 1510

UPC:

857293006499

Product Dimensions:

1-3/4" H x 22" D x 46" L

Carton Dimensions:

3" H x 23.25" W x 47" L

Freight Class:

55

Lead Time:

1-3 Business Days

Product

Weight: **40 Lbs.**

Ship Weight:

41 Lbs.

Product Color:

Black

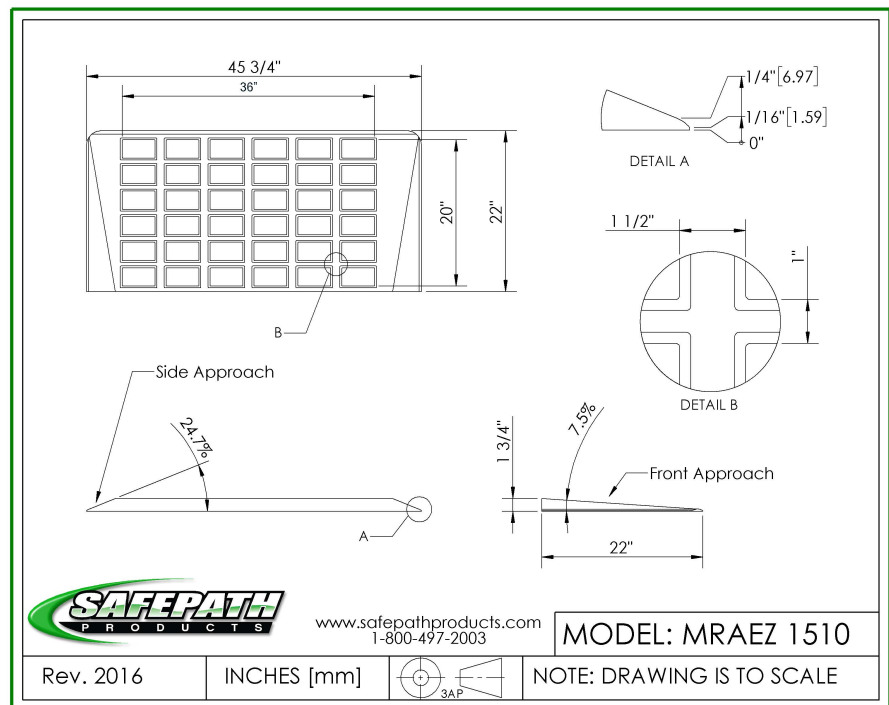
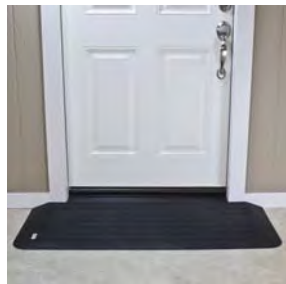
MRSP:

Comments:

D= Depth of Product

Made from 100% Recycled Rubber-perfect for exterior, interior, residential and commercial applications, these ramps have no load weight limitations, unlike aluminum ramp products.

MADE in the USA





EZ Edge TransitionsTM

MRAEZ 1540 1-3/4" H

Product Title:

EZ Edge Transition

Model No.

MRAEZ 1540

UPC: **857293006499**

Product Dimensions:

1-3/4" H x 22" D x 81.25" L

Carton Dimensions:

3" H x 23.25" W x 47" L

Freight Class:

55

Lead Time:

1-3 Business Days

Product Weight:

68 Lbs.

Ship Weight:

2 packages @ 35 Lbs.

Product Color:

Black

MRSP:

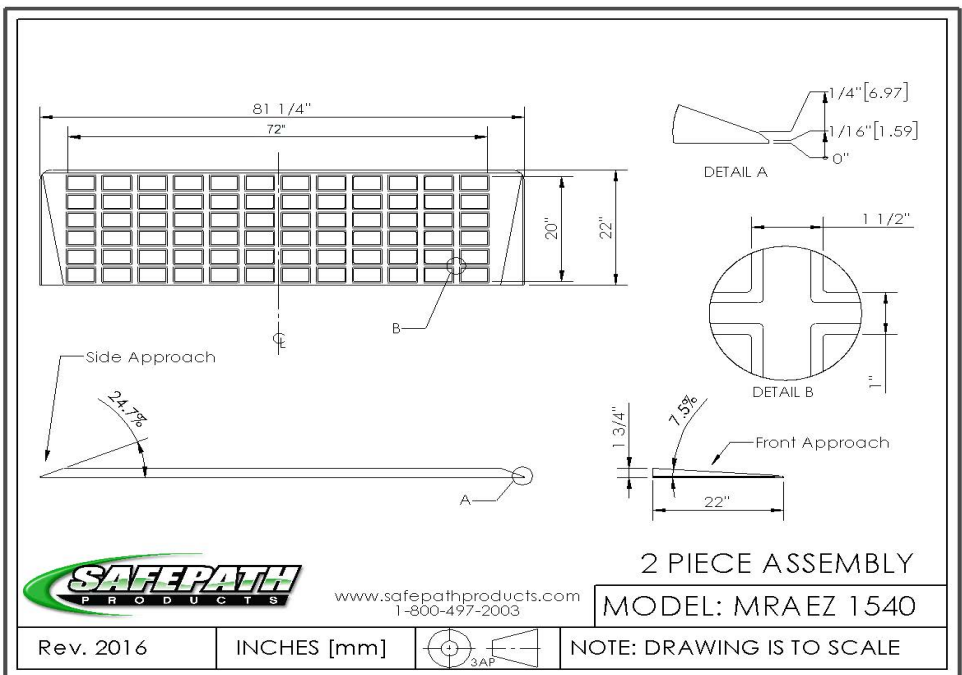
Comments:

Two Part Assembly

D= Depth of Product

Made from 100% Recycled Rubber-perfect for exterior, interior, residential and commercial applications, these ramps have no load weight limitations, unlike aluminum ramp products.

MADE in the USA



888-534-9211




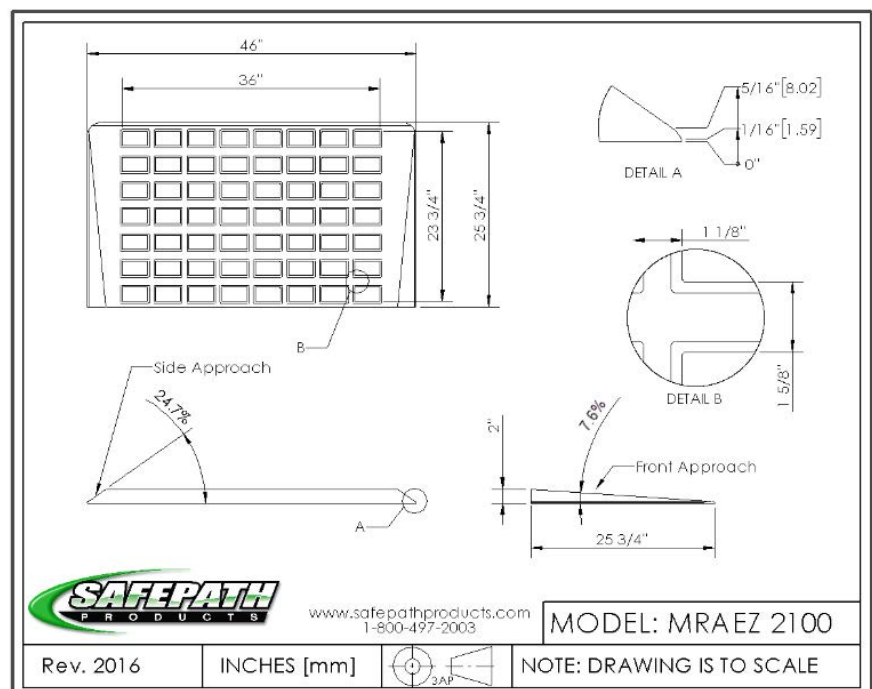
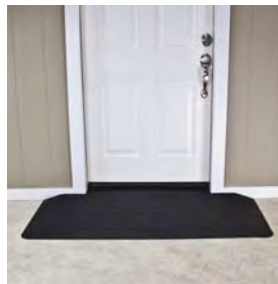
EZ Edge TransitionsTM

MRAEZ 2100 2" H

Product Title:	EZ Edge Transition
Model No.	MRAEZ 2100
UPC:	857293006512
Product Dimensions:	2" H x 23" D x 46.5" L
Carton Dimensions:	3" H x 35" W x 47" L
Freight Class:	55
Lead Time:	1-3 Business Days
Product Weight:	54 Lbs.
Ship Weight:	55
Product Color:	Black
MRSP:	
Comments:	
D= Depth of Product	

Made from 100% Recycled Rubber-perfect for exterior, interior, residential and commercial applications, these ramps have no load weight limitations, unlike aluminum ramp products.

MADE in the USA 






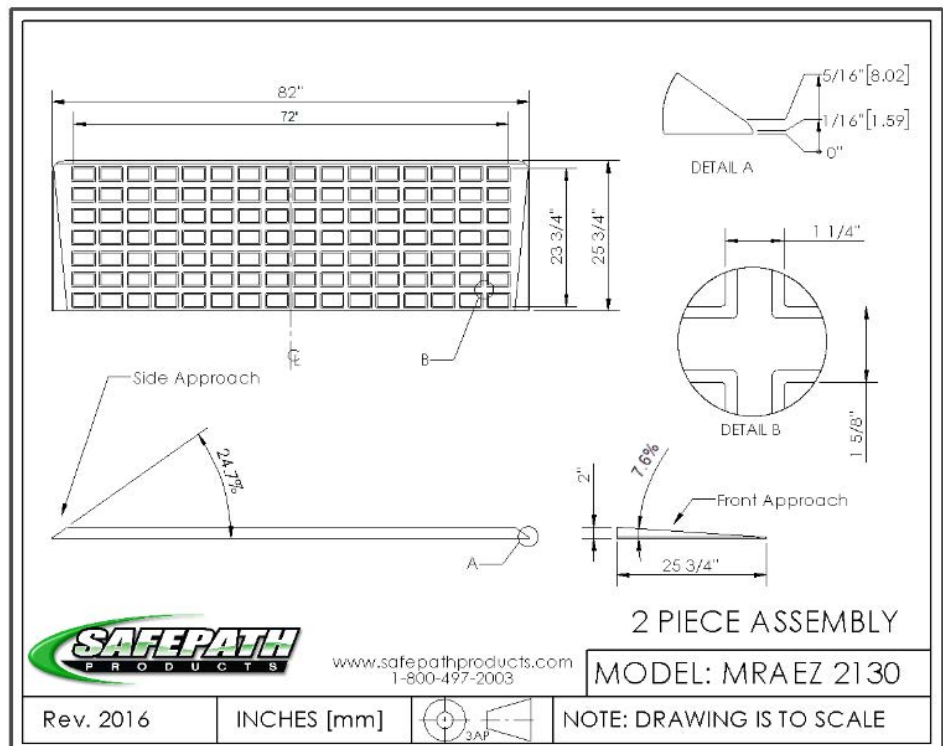
EZ Edge TransitionsTM

MRAEZ 2130 2" H

Product Title:	EZ Edge Transition
Model No.	MRAEZ 2130
UPC:	857293006529
Product Dimensions:	2" H x 23" D x 82" L
Carton Dimensions:	3" H x 35" W x 47" L
Freight Class:	55
Lead Time:	1-3 Business Days
Product Weight:	84 Lbs.
Ship Weight:	2 packages @ 43 Lbs.
Product Color:	Black
MRSP:	
Comments:	Two Part Assembly
	D= Depth of Product

Made from 100% Recycled Rubber-perfect for exterior, interior, residential and commercial applications, these ramps have no load weight limitations, unlike aluminum ramp products.

MADE in the USA 



888-534-9211



EZ Edge Transitions™

MRAEZ 2150 2-1/4" H

Product Title:

EZ Edge Transition

Model No.

MRAEZ 2150

UPC:

857293006536

Product Dimensions:

2-1/4" H x 29.75" D x 46" L

Carton Dimensions:

3" H x 35" W x 47" L

Freight Class:

55

Lead Time:

1-3 Business Days

Product Weight:

62 Lbs.

Ship Weight:

63 Lbs.

Product Color:

Black

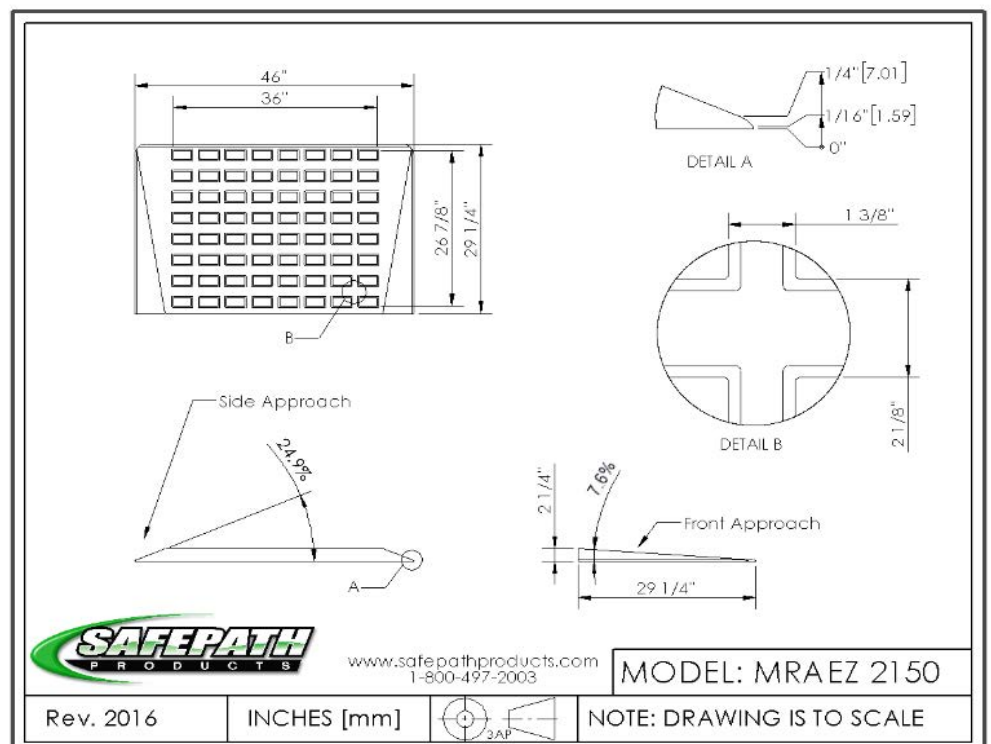
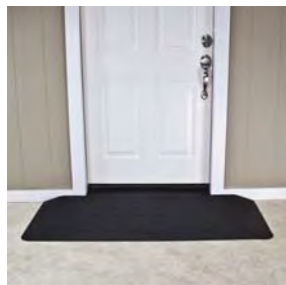
MRSP:

Comments:

D= Depth of Product

Made from 100% Recycled Rubber-perfect for exterior, interior, residential and commercial applications, these ramps have no load weight limitations, unlike aluminum ramp products.

MADE in the USA





EZ Edge TransitionsTM

MRAEZ 2160 2-1/4" H

Product Title:

EZ Edge Transition

Model No.

MRAEZ2160

UPC:

85729300654

Product Dimensions:

2-1/4" H x 29.75" D x 82" L

Carton Dimensions:

3" H x 35" W x 47" L

Freight Class:

55

Lead Time:

1-3 Business Days

Product Weight:

122 Lbs.

Ship Weight:

2 packages @ 62 Lbs

Product Color:

Black

MRSP:

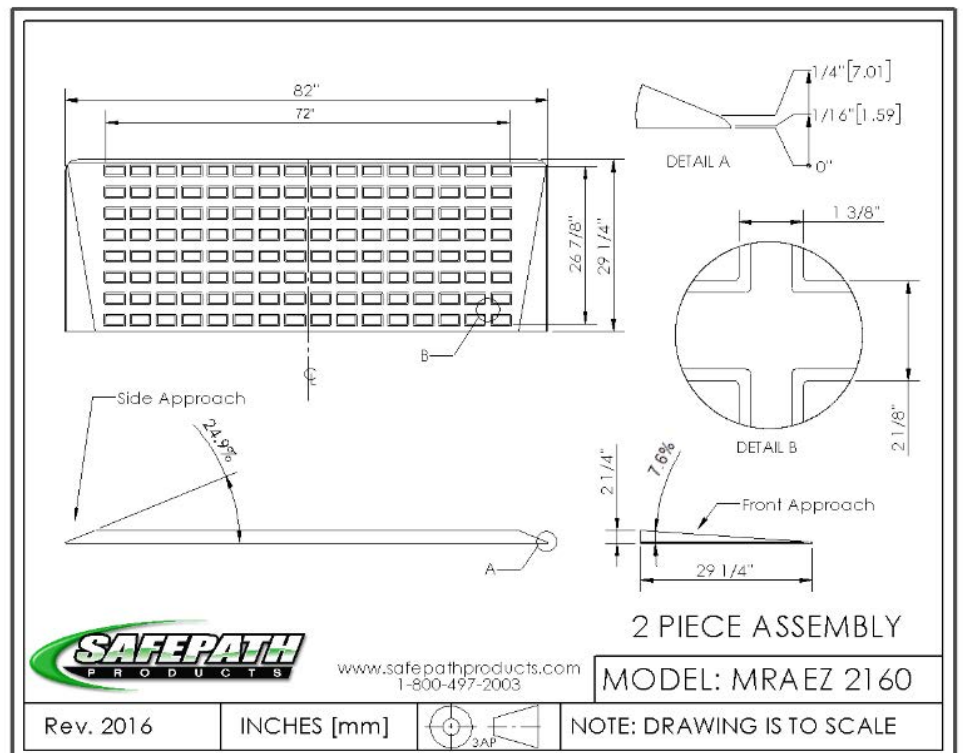
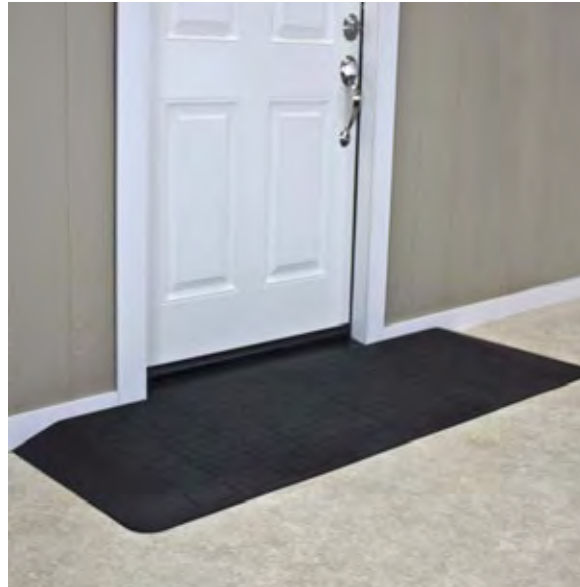
Comments:

Two Part Assembly

D= Depth of Product

Made from 100% Recycled Rubber-perfect for exterior, interior, residential and commercial applications, these ramps have no load weight limitations, unlike aluminum ramp products.

MADE in the USA



888-534-9211



EZ Edge Transitions™

MRAEZ 2170 2-1/2" H

Product Title:

EZ Edge Transition

Model No.

MRAEZ 2170

UPC:

857293006550

Product Dimensions:

2-1/2" H x 30" D x 46" L

Carton Dimensions:

3" H x 35" W x 47" L

Freight Class:

55

Lead Time:

1-3 Business Days

Product Weight:

82 Lbs.

Ship Weight:

83 Lbs.

Product Color:

Black

MRSP:

Comments:

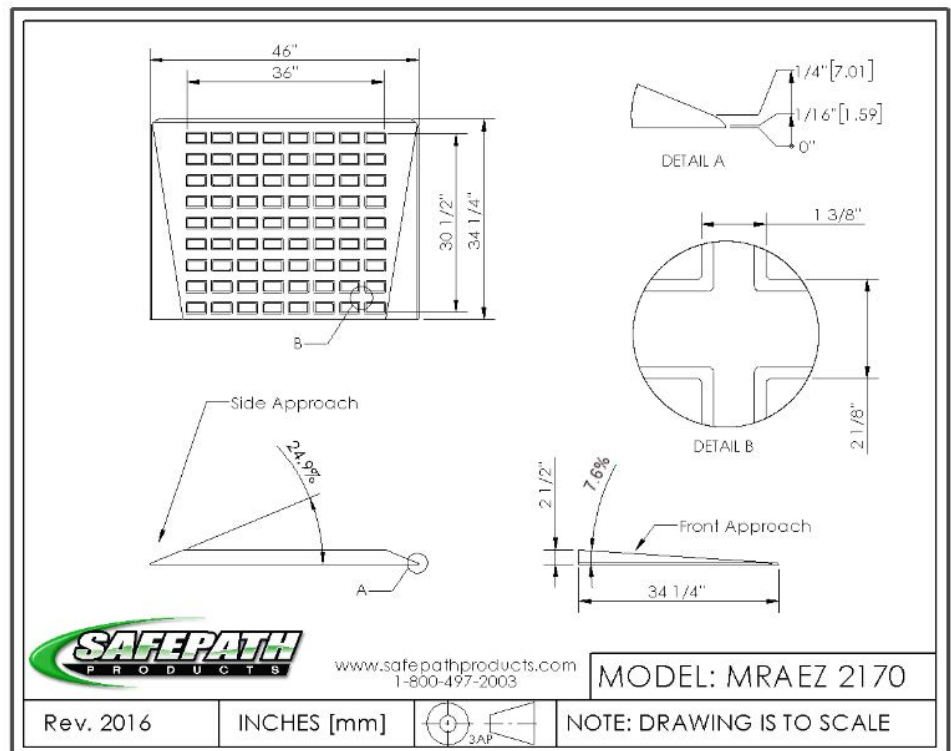
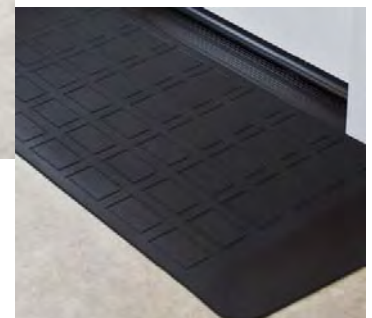
Non-ADA Ramp

Two Part Assembly

D= Depth of Product

Made from 100% Recycled Rubber-perfect for exterior, interior, residential and commercial applications, these ramps have no load weight limitations, unlike aluminum ramp products.

MADE in the USA





EZ Edge TransitionsTM

MRAEZ 2180 2-1/2" H

Product Title:

EZ Edge Transition

Model No.

MRAEZ2180

UPC:

857293006567

Product Dimensions:

2-1/2" H x 30" D x 82" L

Carton Dimensions:

3" H x 35" W x 47" L

Freight Class:

55

Lead Time:

1-3 Business Days

Product Weight:

148 Lbs.

Ship Weight:

2 packages @ 75 Lbs

Product Color:

Black

MRSP:

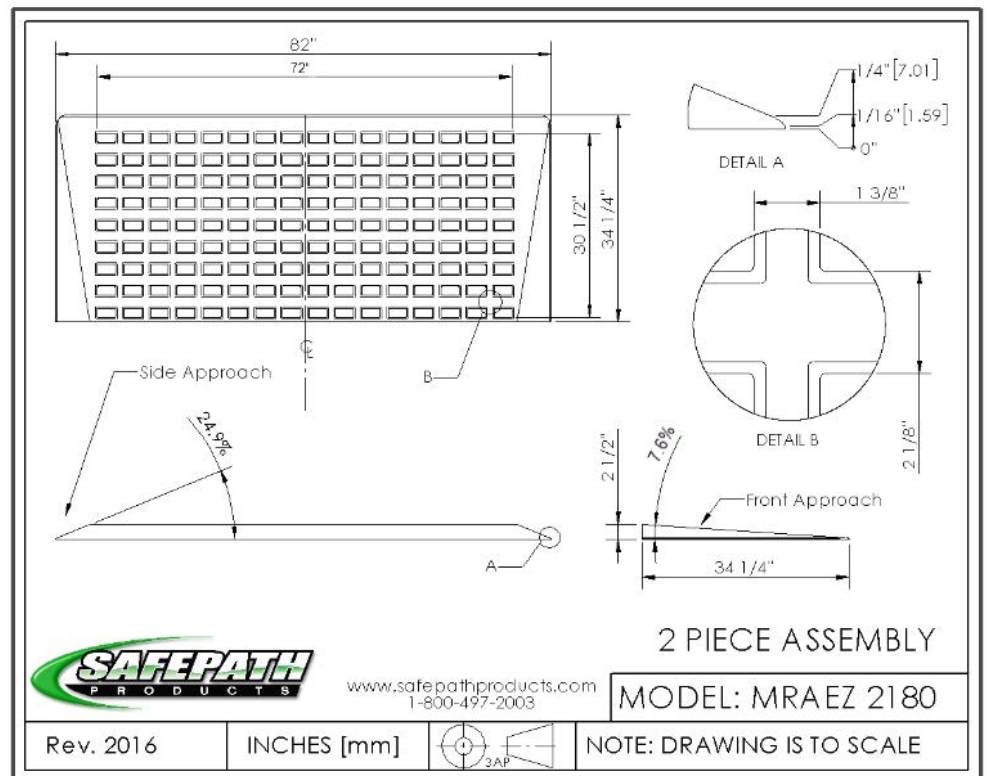
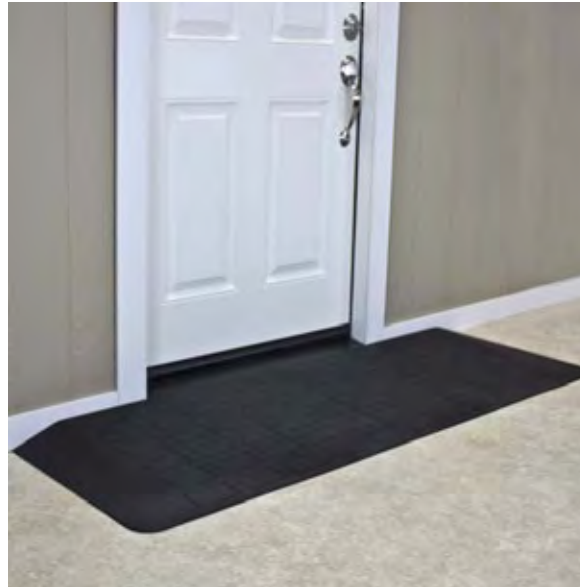
Comments:

Two Part Assembly

D= Depth of Product

Made from 100% Recycled Rubber-perfect for exterior, interior, residential and commercial applications, these ramps have no load weight limitations, unlike aluminum ramp products.

MADE in the USA



888-534-9211



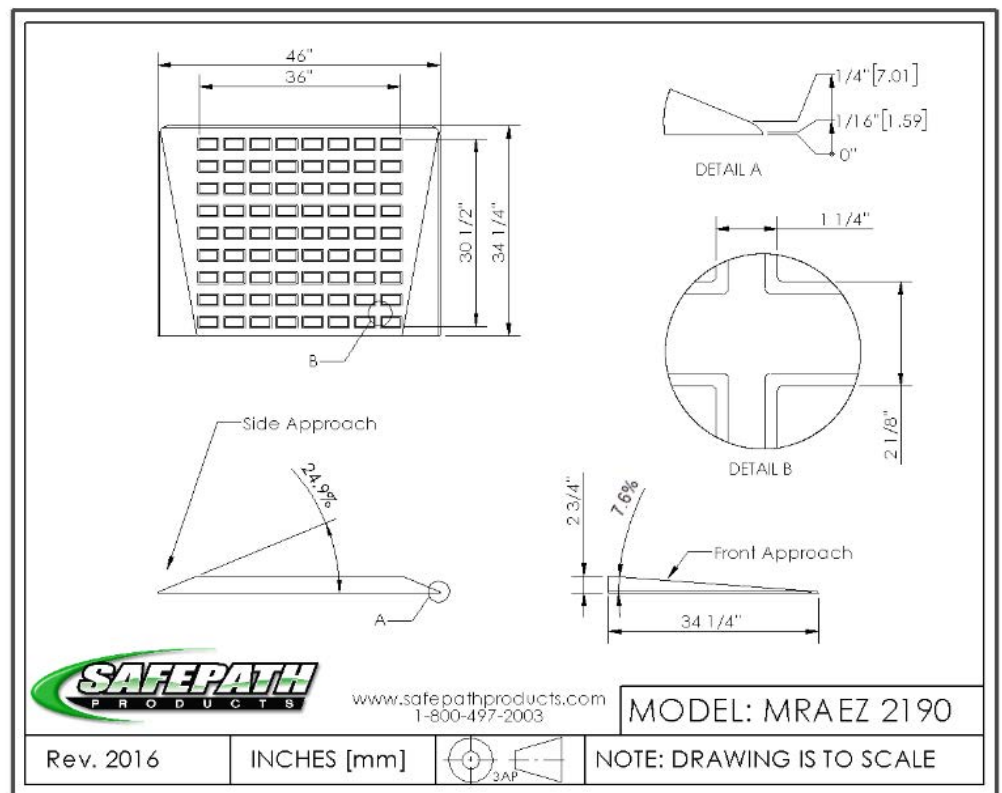
EZ Edge TransitionsTM

MRAEZ 2190 2-3/4" H

Product Title: EZ Edge Transition
Model No. MRAEZ 2190
UPC: 857293006574
Product Dimensions: 2-3/4" H x 34" D x 46" L
Carton Dimensions: 3" H x 35" W x 47" L
Freight Class: 55
Lead Time: 1-3 Business Days
Product Weight: 94 Lbs.
Ship Weight: 95 Lbs.
Product Color: Black
MRSP:
Comments: Non-ADA Ramp Two Part Assembly D= Depth of Product

Made from 100% Recycled Rubber-perfect for exterior, interior, residential and commercial applications, these ramps have no load weight limitations, unlike aluminum ramp products.

MADE in the USA



888-534-9211



EZ Edge TransitionsTM

MRAEZ 2195 2-3/4" H

Product Title:

EZ Edge Transition

Model No.

MRAEZ2195

UPC:

857293006581

Product Dimensions:

2-3/4" H x 34.25" D x 82" L

Carton Dimensions:

3" H x 35" W x 47" L

Freight Class:

55

Lead Time:

1-3 Business Days

Product Weight:

148 Lbs.

Ship Weight:

2 packages @ 75 Lbs

Product Color:

Black

MRSP:

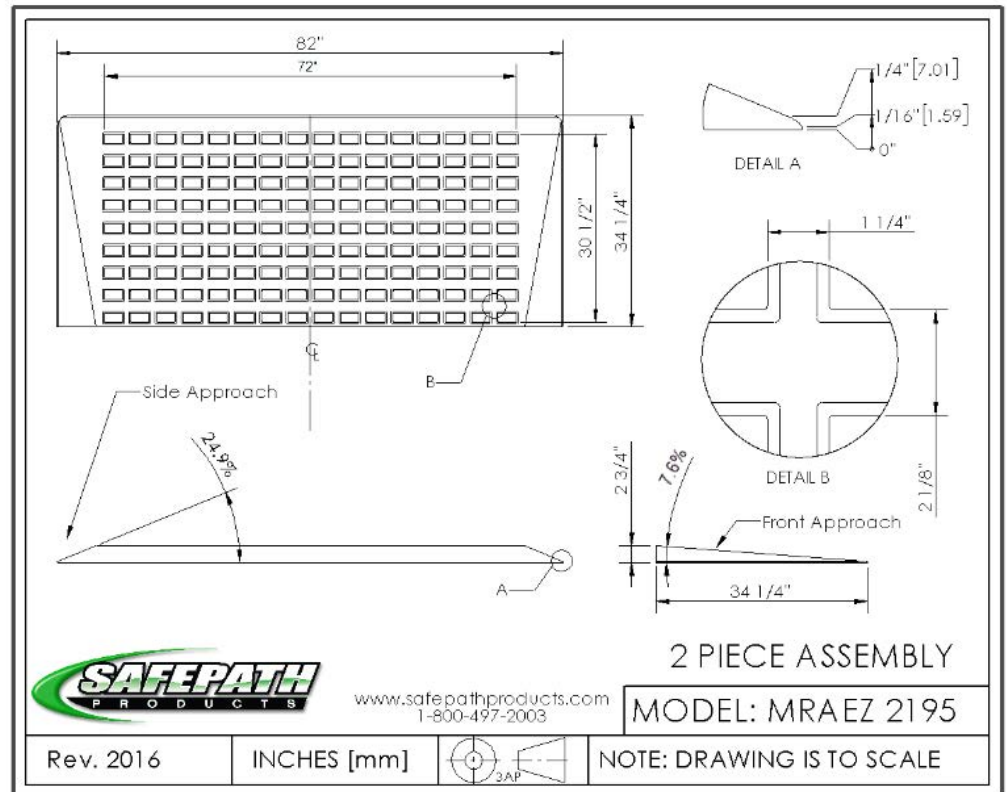
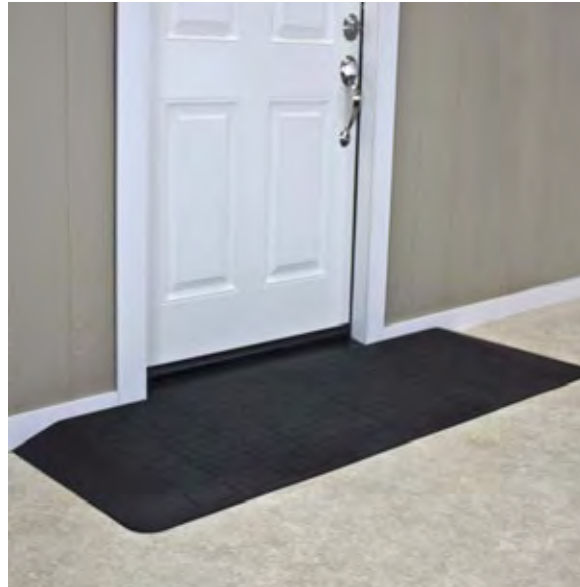
Comments:

Two Part Assembly

D= Depth of Product

Made from 100% Recycled Rubber-perfect for exterior, interior, residential and commercial applications, these ramps have no load weight limitations, unlike aluminum ramp products.

MADE in the USA



888-534-9211

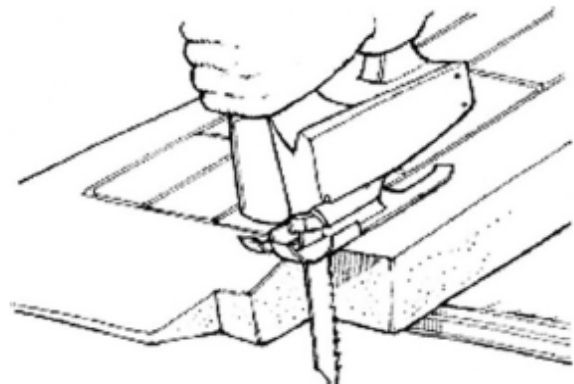


EZEdge™ & Stonecap™ Threshold Ramp Installation Instructions

1. It is imperative that your substrate is CLEAN & FREE OF DEBRIS before beginning installation. A clean, dry substrate ensures maximum adhesion.
2. Dry fit the product by placing it flush against the threshold.
3. Use painter's tape to outline the ramp.
4. Remove ramp.
5. Generously apply adhesive to substrate. (We strongly recommend *SikaFiex 1a* brand adhesive). For best results, apply with a caulking gun, then use a notched cemenUgrout hand trowel to spread evenly.
6. Replace ramp onto adhesive surface.
7. Apply pressure to ramp evenly. Some glue may leak out onto tape.
8. After ramp is in place with adhesive, carefully remove painter's tape.
9. Excess adhesive can be cleaned from the substrate or product by applying acetone or paint thinner.

****If not permanently adhering the ramp to the sub-floor you may use a "temporary" silicon based adhesive or commercial double stick tape.**

*****Note: Excess adhesive will stain clothing, shoes and carpet - immediately clean any excess.*****



WARNING

We DO NOT recommend the use of a power circular saw to cut ramp products. The use of any electrical, battery, or pneumatic powered circular saw may result in serious injury due to unexpected binding, grabbing, or pinching of ramp material.

MATERIAL SAFETY DATA SHEET

IDENTITY (As used on label and list)

Rubber Transitions & Flat Stock

Section I

SafePath Products
21 Valley Court
Chico CA 95973
FAX: 530-893-1560



www.SafePathProducts.com
info@safepathproducts.com

Emergency Telephone Number
530-893-1596

Telephone Number for Information
800-497-2003

Date Prepared
2/3/09

Signature of Preparer (Optional)

Polyurethane elastomers are fully reacted polymers, forming articles with are not considered hazardous under OSHA's criteria in 29CFR1910.1200.

Section II – Hazardous Ingredients/Identity Information

Hazardous Components (Specific Chemical Identity/Common Name(s)) **OSHA PEL** **ACGIH TLV** **NIOSH REL** **%(optional)**

None

Section III – Physical/Chemical Characteristics

Boiling Point	N/A	Specific Gravity (H2O=1)	N/A
Vapor Pressure (mm Hg.)	N/A	Melting Point	N/A
Vapor Density (AIR=1)	N/A	Evaporation Rate (Butyl Acetate=1)	N/A
Solubility in Water	N/A		
Appearance and Odor	N/A		

Section IV – Fire & Explosion Data

Flash Point (Method Used):	N/A	Flammable Levels:	LEL: N/A	UEL: N/A
Extinguishing Media:				
Special Fire Fighting Procedures:	Wear pressure demand self-contained breathing apparatus and protective clothing			
Unusual Fire and Explosion Hazard:	N/A			

Section V – Reactivity Data

Stability: Stable <input checked="" type="checkbox"/> Unstable <input type="checkbox"/>	Conditions to avoid: N/A		
Incompatibility (Materials to avoid):	N/A		
Hazardous Decomposition or Byproducts:	Oxides of Carbon and Nitrogen		
Hazardous Polymerization:	May Occur <input type="checkbox"/>	Will Not Occur <input checked="" type="checkbox"/>	Conditions to Avoid: N/A

Section VI – Health Hazard Data

Route(s) of Entry:	Inhalation? No	Skin? No	Ingestion? No
Health Hazards (Acute & Chronic):			
Carcinogenicity:	NTP? No	IARC Monographs? No	OSHA Regulated? No
Signs & Symptoms of Exposure:	N/A		
Medical Conditions Generally Aggravated by Exposure:	N/A		
Emergency & First Aid Procedures	N/A		

Section VII – Precautions for Safe Handling

Steps to be taken in case of material spillage or release:	N/A
Waste Disposal Method:	Dispose of in accordance with Federal, State and Local Environmental Regulations.
Precautions to be taken in Handling & Storing:	N/A
Other Precautions:	N/A

Section VIII – Control Measures

Respiratory Protection (Specify Type):	N/A				
Ventilation:	Local Exhaust: N/A		Mechanical (General): N/A	Special: N/A	Other: N/A
Protective Gloves:	N/A	Protective Eyewear:		N/A	
Other Protective Clothing or Equipment:	N/A				
Work/Hygiene/Maintenance Programs	N/A				